



for our

Family Friends & Whānau

of Churton Park School



administration.

We believe in
Empowering
Connected
Lifelong
Learners

21st February Summer 2024

Term 1. Week 4.

Admin Corner - te iwi tahi tatou - we are one family



Matt Stanley

Principal of
Churton Park School.

90 Churton Drive

Churton Park

Wellington 6037

Phone 04 478 4282



**Arrive from
8:30 am**

Please have your bag hung, ready
to start



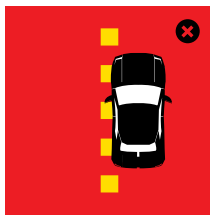
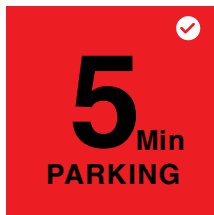
**Ready to
Roll 8:50 am**

It's School-time

School Hours -

Children can arrive at school from 8.30am and should be at school by 8.50am so they have time to put their bags away and get settled ready for school to begin at 9am. If your child arrives after 9am they must sign in at the office on the iPad.

Safety is a choice you make



Our Safety Rules:

- The parking space directly outside school on Churton Drive is a 5 minute only parking in the morning and after school. If you wish to come into school with your child you must park elsewhere. The free flow of traffic through this area allows parents to bring their child/ren to the gate.
- U turns near the school entrance are dangerous for students using the footpath. Please drive further up the street to turn around.
- Parking on yellow lines or at the bottom of the drive for a quick drop off inhibits the view of the road patrollers. Please find a safe place away from the school driveway to pull in.
- Make sure you cross your children on the pedestrian crossing, not down at the corner or close to your car. Also, please ensure that you as an adult also use the crossing after you have dropped your child at their class. This sets the right example to all our children.
- Please use the footpath alongside the main entryway driveway when you come into the school from Churton Drive.
- Please do not park over our neighbours driveways.
- We ask that parents do not drive up the drive in the mornings to drop children off for the Before School Care programme – it becomes quite a traffic jam when our school staff are also arriving in their vehicles.

Our Road Patrollers need You!



Our volunteer school patrollers stand at their school crossings twice a day without fail, in rain, wind and shine, to help keep the road that passes our schools safe for their school mates. We are looking for volunteers to help supervise our road patrollers. We currently need help on Tuesday, Thursday & Friday afternoons.

Please contact mareeg@churtonpark.school.nz for more information or to volunteer.

Movin' March Is Coming!

Movin' March! Let's try and make it Movin' 2024!

Why stop at March. Walking, biking, scootering, dancing, skipping, hopping - all great ways to ease the traffic on Churton Drive and have fun getting to school!

More information about Movin' March coming shortly.



Upcoming Events for Your Calendar:-

- Home & School Association meeting - Monday 11th March 7pm
school staffroom - anyone is welcome to come along, learn what is involved. Many hands make light work
- Learning Conversations - Tuesday 26th & Wednesday 27th March.
More information to come
- Easter Holidays - Friday 29th March - Tuesday 2nd April. School will be closed until Wednesday 3rd April
- End of Term 1 - Friday 12th April
- Term 2 begins - Monday 29th April
- School Cross Country - Early Term 2, Run-A-Thon Fundraiser - more details to come
- Year 6 Camp - Term 4, week 5 12th -15th November - more details to come



School Donations 2024



On Monday night the Board of Trustees met and have set the donations for 2024. The Board decided to retain the same donation amounts as 2023. All donations are voluntary and qualify for a tax rebate of 33%. Receipts are issued as we receive donations.

Because of our Equity Index Number (this replaced deciles last year), the Ministry does not fund us fully and we rely on fundraising and donations to run the school.

Attached with this newsletter we have the letter outlining the donations and how you can make payment.

We thank you for your support.

Swimming Continues



Making a splash Term 1.

Swimming has started - Wednesday Years 3 & 4, Friday Years 1, 2, 5 & 6. Please make sure your child has their swimming gear including, goggles, swimsuit, towel in a named bag.

Our Values

At CPS we believe and practise the following values daily at school

Manaakitanga
- Respect

Eke Panuku
- Success

Hauora
- Wellbeing

Pou
manawaora
- Resilience

Ngahau
Fun

Churton Park School Netball 2024

The new netball season will be starting soon

Later this week, information and registration forms will be available from class teachers for children in years 3 to 6 who are interested in playing netball for Churton Park school in the upcoming 2024 season.

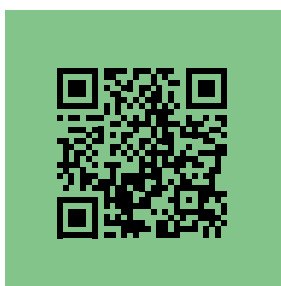
Completed forms can be given back to your child's class teacher or scanned and emailed to netball@churtonpark.school.nz

The netball season doesn't start until 4 May 2024, however all teams need to be registered with the Northern Suburbs Netball Committee (NSN) during the period 25 March to 10 April 2024. For Year 6 players trials will be held in March. For more information on northern suburbs netball visit www.nsnetball.co.nz

Year 1 and 2 Netball – unfortunately at this stage NSN have been unable to find a Co-ordinator to run the Year 1 and 2 netball programme for all northern suburbs schools. We will keep you updated and if NSN are able to fill this role then more information on registration for Year 1 and 2 players will be sent home.



Save time order lunches online



Lunchonline.co.nz

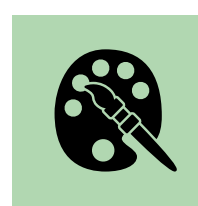
School Lunches can be purchased online at Lunchonline.co.nz, Families: Take the hassle out of your morning and order a school lunch with us. Find out how by scanning the QR Code below. Menu's consist of foodgroups in or vicinity including, sushi, bakery foods, fusion foods. Schools: Take lunch administration out of the office and into the cloud.

KellyClub Before/After school-care programme

Time to join the club:

At Kelly Club Churton Park, we provide quality before - and after-school and holiday programme care. Our programmes are packed with fun activities including cooking, discovery, sports, arts and crafts. We also offer flexible payment plans and same-day booking and cancellations. Visit www.kellyclub.co.nz for bookings and any further information. Click the link below.

[KellyClub](#)



[Visit Website](#)

For more information
visit our website here by
scanning this QR Code



Public Notices

These notices are provided for your information



Samuel Marsden Collegiate School – Girls entering Year 7 in 2025

Marsden warmly invites families of girls entering Year 7 in 2025 to their first Open Morning for 2024 on Friday 22 March, 8.45am-12pm. Please register at www.marsden.school.nz/register

Scholarships for entry in 2025 are now open. For more information and to apply, visit www.marsden.school.nz/enrolments/scholarships

marsden.school.nz Marsden, Inspiring Girls

CARBOOT SALE

\$25 PER CAR
BOOK YOUR SPOT NOW

SUNDAY 24TH MARCH 2024
10AM - 1PM
CROFTON DOWNS PRIMARY
SCHOOL BOTTOM FIELD

SELL YOUR UNUSED OR UNWANTED
CLOTHES/BOOKS/KIDS TOYS AND
GAMES/HOUSEHOLD ITEMS/SHOES &
MORE

BAKE SALE

SAUSAGE SIZZLE

Email the PTA for more information and to book
your space now: croftondownspta@gmail.com



31 MAY - 2 JUNE

KING'S BIRTHDAY WEEKEND

TSB ARENA WELLINGTON

NZ
ART
SHOW

TERM 1

SPRING INTO SPORTS

EVERY WEDNESDAY, 3:05pm - 4:05pm

BOOKINGS STILL OPEN!

BOOK ONLINE NOW AT

 **KELLYSPORTS.CO.NZ**



Athletics



Ultimate Frisbee



Dodgeball



Turbo Touch

Contact Information

adminwgtm@kellysports.co.nz



Playcentre 
Open Week
5-8 March 2024



Play, learn and grow together
with your pēpi or tamariki and
make connections with other
whānau in your community.

Newlands Tamariki
Playcentre 

Tuesday, 5 Mar 2024
10:00 - 12:30

Wednesday, 6 Mar 2024
10:00 - 12:30

Thursday, 7 Mar 2024
10:00 - 12:30

Friday, 8 Mar 2024
10:00 - 12:00

Nau mai haere mai! Everyone Welcome!

newlandstamariki@playcentre.org.nz
134 Newlands Road, Newlands



**KELLY
CLUB**

THEME: Staff Choice

Term 1 Week 4, 26th February 2024

Weekly Activities Plan
Kelly Club Churton Park

	Monday	Tuesday	Wednesday	Thursday	Friday
7:00 - 8:00 am	Structured Free Time	Structured Free Time	Structured Free Time	Structured Free Time	Structured Free Time
8:00- 8:30 am	Game: Scattergories	Game: Peg Tag	Game: Dead Ants	Game: Obstacle Course	Game: Bingo
3:00 - 3:15 pm	Sign In & Intro	Sign In & Intro	Sign In & Intro	Sign In & Intro	Sign In & Intro
3:10 - 3:30 pm	Game: Animal Freeze	Game: Silent Ball	Game: Simon Says	Game: Red light, Green Light	Game: Captains Coming
3:30 - 3:45 pm	Afternoon Tea Garlic bread & Fruit	Afternoon Tea Cheese, Crackers & Fruit	Afternoon Tea Noodles & Fruit	Afternoon Tea Popcorn & Fruit	Afternoon Tea Breakfast Cups & Fruit
Activity 1 3:45 - 4:30 pm	CRAFT Tissue Paper Art 	COOKING Decorate your own Banana 	DISCOVERY Face Painting 	COOKING Fairy Bread 	GAME Mountain Scrape 
	SPORT Water Balloon Lawn Bowls 	DISCOVERY Clay Creations 	GAME Noodle Pass 	CRAFT Stress Balls 	SPORT Football 
4:30 - 4:45 pm	Tidy Up & Snack Time	Tidy Up & Snack Time	Tidy Up & Snack Time	Tidy Up & Snack Time	Tidy Up & Snack Time
4:45 - 5:30 pm	Homework & Fortune Tellers	Homework & Card Games	Homework & Hangman	Homework & Sleeping Lions	Homework & No Yes No
5:30 - 6:00 pm	Structured Free Time	Structured Free Time	Structured Free Time	Structured Free Time	Structured Free Time