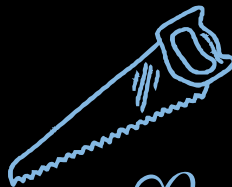


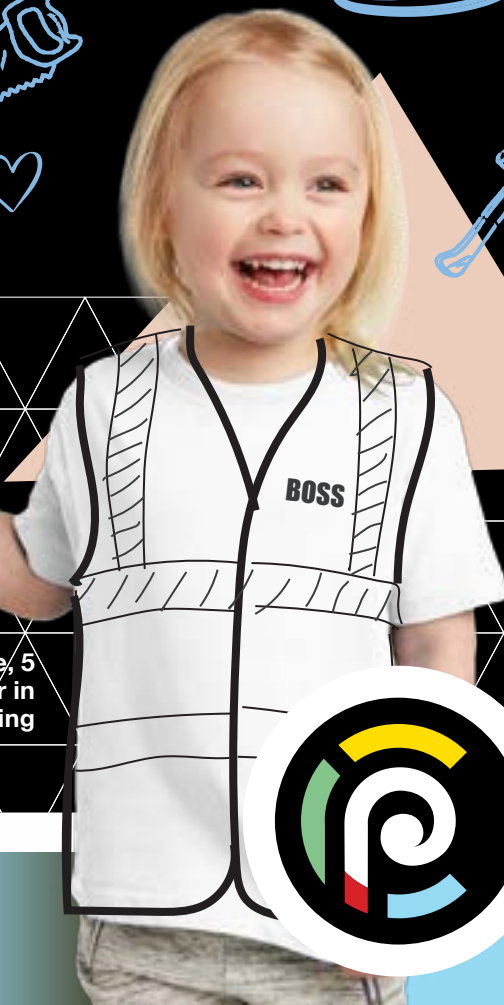
for our

# Family Friends & Whānau

of **Churton Park  
School** ESTD  
1975



Zoe, 5  
Builder in  
the making



## administration.

30th July 2025

Term 3. Week 3.

### Principal's Corner - te iwi tahi tatou - we are one family

#### Empowering Connected Lifelong Learners

##### Traffic



We've recently received reports from neighbours concerning abusive behaviour from some parents regarding parking on yellow lines and over driveways. This is totally unacceptable.

Please ensure you follow our school's traffic information

and parking guidelines. Your cooperation in respecting our neighbours is paramount. Most importantly, ensuring the safety of all our children around the school is our top priority.

Thank you for your understanding and cooperation.

**Matt Stanley**

Principal  
Churton Park School.

90 Churton Drive

Churton Park

Wellington 6037

Phone 04 478 4282

**Contact School**

## Have you downloaded the HERO App yet?

This term we have changed how we send out communications to our school whānau. We are now using HERO, an app that can be downloaded to your phone or accessed through your browser. We are sending all our newsletters out through HERO and we are gradually moving from Seesaw for our class communications.

Currently on HERO you can:

- Advise an Absence
- Access NZ Uniforms to order t-shirts, sun hats & sweatshirts
- Order school lunches from Lunch On Line - (you will need to set-up an account for your child)
- Quick link to our school website & calendar
- View school policies
- Access our school facebook page
- View term date
- Access your financial details - see what you have paid & what is still due as well as download your own tax receipts
- Update your contact details

And very soon you will be able to:  
View/download your child's school report

Coming next month we will be changing how you can book your Learning Celebrations. This will only be available through HERO, we will send a notice through HERO to advise when the bookings are open.

Download the app now so you don't miss out!



## Cellphones & Smartwatches at School

Last year the Government introduced regulations that require all state schools to put in place school rules regarding the use of phones. The regulations mean cellphones & smartwatches either do not come with the student to school, or are switched off and kept in their bags when students enter the school grounds. The phone or watch must remain switched off for the whole school day.

If your child is unwell during the day the school will contact you.

Please view our [Cellphone and other Digital Devices policy](#) by using the link to School Docs and entering  
username: churtonpark  
Password: learningforlife



Welcome  
to our new  
Ākonga



Kenepuru Stream

## Traffic Around The School Gates

Please remember U turns near the school entrance are dangerous for students and other drivers. Please drive further up the street to turn around.

### Cranwell Street & Dormar Place

Cranwell Street and Dormar Place are very narrow at the ends where the school gates are located. The council have painted yellow lines around the cul-de-sac and these have been there for several years now.

Yellow lines mean you cannot for any reason stop or wait in this area. When cars are stopped on the yellow lines waiting for children this stops children having a clear view of the road to cross safely, stops cars being

able to turn without reversing and stops cars being able to leave the area safely.

Please do not park or wait on the yellow lines or over driveways.

### Churton Drive

The area directly at the front of the school is a **Pick-Up / Drop-Off Zone**. This means you can not park your car in this area from **8am - 9am & 2.30pm - 3.30pm**. **The maximum time you may wait is 2 minutes and drivers must not leave the vehicle.** If your child has not come out in the allotted time, please move off and let others pick up their children. By the time you have gone around the block your child will be there waiting for you.

If you would like to park your car and go to your child's class to collect

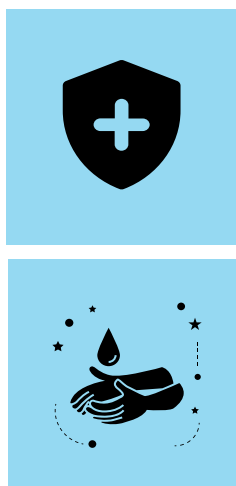
your child, please use the parking space on the opposite side of the road where there is a **5 minute parking area** or park further up the road and walk back to school.

Please do not park or wait on yellow lines or over our neighbours driveways (or in their driveways without their permission)!

We are doing our best to take care of your children safely so please do not be offended if you are asked by staff or our road patrol parents to move your vehicle.



## Illness



As we head into the middle of winter we are seeing a lot of tamariki coming to school unwell.

If your child is not well please keep them at home so we can minimise the spread of sickness to other tamariki as well as the staff. We are reminding our tamariki about correct hygiene procedures (washing hands, sneezing & coughing into your elbow, putting tissues in the rubbish bin) to help keep everyone safe. There have been three of our children hospitalized with influenza B (flu) over the past 3 weeks.

Click here for more information about [Influenza \(flu\)](#)

## Road Patrol Help Urgently Required

We are currently looking for an amazing person to volunteer to help our wonderful road patrollers on Wednesday afternoons from Term 3. Please contact Liz McLean if you are able to help us out.

Thank you in advance.

Please contact [lizm@churtonpark.school.nz](mailto:lizm@churtonpark.school.nz) for more information or to volunteer.



**Contact Liz**

## Board of Trustee Elections

**Nominations close Monday 4th August, midday!**



Nominations are now open! Check your inbox for an email from the Returning Officer.

(1) Check that your details are correct. This is an online election.

(2) You can nominate online at [www.myschoolelection.nz/mynomination](http://www.myschoolelection.nz/mynomination).

(3) Nominations close at midday on 4 August

(4) The electoral roll is available for public inspection at the school office.

## New World Club Card Partnership

### An easy way to help us raise funds

Have you registered your New World Club Card yet? Fundraise for Churton Park School simply by linking your New World Club Card to the school and shopping at Churton Park New World. For every \$100 you spend \$1 will be donated to Churton Park School. By linking your Club Card there is

no impact on your card benefits. Simply complete this form <https://forms.gle/BNm175pNYmsJKd-Dq7> and continue shopping.



## Missing Puffer Jacket

Last week after netball practice a navy blue Macpac puffer jacket was left on the steps beside the netball courts. The child has looked for the jacket but is unable to

find it in the lost property box. If you have picked it up could you please drop it off at the Office so we can reunite the jacket with its owner. Thanks



## Sunhats, T-Shirts & Hoodies

**As part of our Sunsmart policy all children at Churton Park School are required to wear a sunhat when they are outside during Terms 1 & 4.**

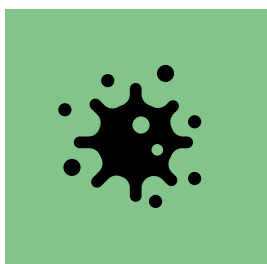
Sunhats can be purchased from NZ Uniforms either online or at their Porirua shop. Please make sure you have a school sunhat for your child. If your child has the old style sunhat they can continue to wear them but if your child still needs a school sunhat, please make sure you have purchased one as soon as possible. Sunhats, T-shirts & Hoodies can be purchased using this link <https://churtonpark.nzuniforms.com/catalog/uniform-1107113.htm>

**Order your items now**



**Order Here**

## Please remember to advise us of Absences



### Please keep us in the loop

This year we must report any absences to the Ministry of Education daily.

This means that if you do not tell us why your child is away they will be marked as truant.

If your child is going to be away from school for any reason - illness, appointments, travel, funerals etc - it is very important that you let the office know, so we can account for all our students.

The office will let the classroom teacher know your child is absent.



Often teachers can be away sick or on a course and do not have access to their emails.

If you receive a text from the school looking for your child, please respond. You are able to report an absence in several ways:

### Ways to report an Absence

Call - 04 4784282 ext 1

Text - 0274 295 477

Eml - [absence@churtonpark.school.nz](mailto:absence@churtonpark.school.nz)

Web - [www.churtonpark.school.nz](http://www.churtonpark.school.nz)



## Is your child turning 5 in 2025 or 2026 ?



### Help us to plan ahead

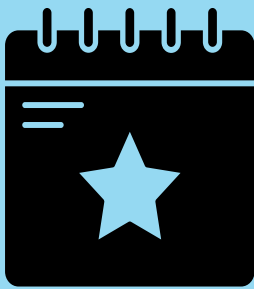
To help with our planning for the rest of this year and next year please let the school office know if the following things apply to you:

- Live In-Zone and have a new entrant child who turns 5 in 2025 or 2026 and you are yet to pre-enrol with the school office
- If you live In-Zone but have a child attending another school but intend to enrol at Churton Park School in 2025 or 2026
- If you live Out-of-Zone with a child enrolled at Churton Park School and have a child turning 5 in 2025 or 2026
- If you have a friend, family member or neighbour that does not receive these news

letters but may fall into one of the above categories, please ask them to contact the school as soon as possible by either dropping in to the office, by phone 04 478 4282, email [office@churtonpark.school.nz](mailto:office@churtonpark.school.nz) with their child's name, date of birth and your address or by completing an online enrolment form on our website [www.churtonpark.school.nz](http://www.churtonpark.school.nz) This information is crucial as we plan for the future.

**Contact School**

## Upcoming Events & Reminders for Your Calendar:



- Monday 4th August - Board of Trustee nominations close @ noon
- Monday 4th August -

Rāroa Intermediate Parent Information Evening, Rāroa Intermediate 6pm

- Tuesday 19th August - Mathswell Comp for selected Yr5/6 students
- Monday 25th August - 19th September - Bee Healthy Dental Van onsite
- Wednesday 3rd September Board of Trustee Election
- Wednesday 3rd & Thursday 4th September - Learning Conferences, 3.15 - 7.15pm

- Saturday 13th September - St Brigid's Kapa Haka Festival, Newlands College
- Friday 19th September - End of Term 3
- Monday 6th October - Term 4 begins
- Thursday 30th October - Year 5 Zoo Trip
- Monday 24th - Friday 28th November TBC- Pack The Bus is coming

**Contact School**

**Visit Website**

## School times and Signing In or Out

01



**Arrive by  
8:50 am**

Please have your bag hung, ready to start

02



**Home time  
3:00 pm**

It's home-time or after school care-time

### School Hours -

Children can arrive at school from 8.30am and should be at school by 8.50am so they have time to put their bags away and get settled ready for school to begin at 9am. If your child arrives after 9am or you are collecting your child for any reason before 3pm they must sign in or out on the iPad at the office.

## Save time order lunches online



### Lunchonline.co.nz

School Lunches can be purchased online at [Lunchonline.co.nz](http://Lunchonline.co.nz), Families: Take the hassle out of your morning rush and order a school lunch with us. Find out how by scanning the QR Code seen left. Our menu's consist of products from suppliers in our vicinity including, sushi, bakery foods, fusion foods. Lunches are delivered to the school office for your child to collect at lunchtime.

## Our KellyClub Before/After school-care programme

### Time to join the club:

At Kelly Club Churton Park, we provide quality before - and after-school and holiday programme care. Our programmes are packed with fun activities including cooking, discovery, sports, arts and crafts. We also offer flexible payment plans and same-day booking and cancellations. Visit [www.kellyclub.co.nz](http://www.kellyclub.co.nz) for bookings and any further information. Click the link below.

KellyClub



## Our Values

At CPS we believe and practise the following values daily at school

Manaakitanga  
- Respect

Eke Panuku  
- Success

Hauora  
- Wellbeing

Pou  
manawaora  
- Resilience

Ngahau  
Fun



***RĀROA NORMAL INTERMEDIATE SCHOOL***

***TE KURA WAENGA O RĀROA***

**EXPERIENCE THE VERY BEST OF EDUCATION FOR THE MIDDLE YEARS**

## **Parent Info Evenings 6pm-7pm**

### **Monday 4th August**

Khandallah, Churton Park, Other Schools

### **Tuesday 5th August**

Amesbury, Ngaio, Johnsonville

### **Wednesday 6th August**

Cashmere Ave, Westpark, Crofton Downs

## **Open Mornings & School Tours 9am-10.30am**

### **Tuesday 5th August**

Khandallah, Churton Park, Other Schools

### **Wednesday 6th August**

Amesbury, Ngaio, Johnsonville

### **Thursday 7th August**

Cashmere Ave, West Park, Crofton Downs

**2026 ENROLMENTS ARE NOW OPEN  
AT RAROA.SCHOOL.NZ**





## Our Public Notices Section. 1

### Goodtime Music Academy

#### Make some Noise!!!

Get ready to ignite your child's musical passion! Goodtime Music Academy teaches at Churton Park Primary School and is offering award-winning in-school music lessons. Say goodbye to post-school commutes! Dive into the world of music in a vibrant group setting with the following instrument lesson: Drums, Guitar, Keyboard, Ukulele, or our

'Intro to Music' course. But the excitement doesn't stop there! Your child will have the chance to shine in our thrilling concerts. Act fast, as spots are limited. Enrol now at [www.goodtimemusicacademy.co.nz/learn-at-school](http://www.goodtimemusicacademy.co.nz/learn-at-school) or call us at 04 568 2237. Your child's moment in the limelight awaits



### Big Energy? Then Big-Air is for You!

#### **BIGAIR** GYMSPORTS & CHEERLEADING

Ready to flip, tumble, and soar? Bigair Gym is the ultimate destination for kids who want to learn cool skills, achieve and build unstoppable confidence! Whether it's cartwheels, flips, tramp tricks, or parkour, Bigair Gyms action packed classes combine fun, fitness, and focus, in a safe, supportive space.

Classes to Help Your Child Shine:

Crashmat Kids Sessions (walking-4 years) – Great for little ones to become familiar with the gym.

Pocket Rockets Gym Classes (3-4 years) – Start building coordination and confidence early!

Gravity Busters Gym Classes (5+ years) – Learn the fundamentals of gymnastics and tumbling.

Team Extreme Gym Classes (Advanced) – Take your skills to the next level!

Free Running (5+ years) – Parkour + flips = epic agility and body control.

Trampoline (5+ years) – Boost spatial awareness and acrobatic abilities.

Recreational Cheerleading (5+ years) – Strength, flexibility, performance—Cheer style!

Tumbling (5+ years) – Learn walkovers, handsprings & aerials—perfect for Cheerleaders and Dancers wanting to boost flexibility and stage skills.

Hurry – Book Online Now for Term 3 Before Spaces Run Out

at [www.bigairgym.co.nz](http://www.bigairgym.co.nz)! Don't miss out on the chance to help your child grow, achieve, learn, and have fun at Bigair Gym!

Contact us at: Bigair Gym  
Tawa: ph. 232 3508, e. [office@bigairgym.co.nz](mailto:office@bigairgym.co.nz)  
at 10b Surrey Street, Tawa.

#### Email Big Air Gym

#### Book online for Term 3

Gym Classes at Big Air Gym

W. [www.bigairgym.co.nz](http://www.bigairgym.co.nz)

C. 04 232 3508,

E. [office@bigairgym.co.nz](mailto:office@bigairgym.co.nz)

A. 10b Surrey Street, Tawa.



**KELLY SPORTS**

# Frosty Fun, Winter Sports Warm-Up!

**CHURTON PARK SCHOOL**

**EVERY WEDNESDAY, 3:05PM – 4:05PM**

Traditional Maori Games      Athletics - Throwing  
Football      Athletics - Jumping

(2 weeks of each sport)

**KELLYSPORTS.CO.NZ**

This weekly programme gives children the skills and confidence in a fun and enjoyable environment.

It also encourages their enthusiasm for sport and the life skills that such involvement brings,

Giving them the confidence to join sports clubs and teams in the future.

Starts Wednesday 23 July 2025 for 8 weeks. [www.kellysports.co.nz](http://www.kellysports.co.nz)



## Public Notices Section. 3

### Samuel Marsden Collegiate School – Open Day for Year 7 entry in 2026

Marsden warmly invites families of girls entering Year 7 in 2026 to their final Open Day for 2025 on Friday 15 August, 8.45am–12.00pm. Please register at [www.marsden.school.nz/news-events/experience-marsden/open-days](http://www.marsden.school.nz/news-events/experience-marsden/open-days)

Māori & Pasifika Scholarships for entry in 2026 close 22 August 2025. For more information and to apply, visit [www.marsden.school.nz/enrolments/scholarships](http://www.marsden.school.nz/enrolments/scholarships)



### Draw It Out Parents block course

For parents of neurodivergent children

Care for yourself so you can care for others by processing your emotions using a gentle powerful tool, Interactive Drawing Therapy.

● 10:30 AM - 11:45 AM ● 4 WORKSHOPS

TUES 19 AUG, TUES 26 AUG, TUES 2 SEPT, TUES 9 SEPT

Re-finding yourself | Caring for your needs | Self-compassion | Seeing potential

**\$46 each** ● BOOK: [events.humanitix.com/draw-it-out-parents](https://events.humanitix.com/draw-it-out-parents)

2/105 High St, Lower Hutt. No art skills needed. [drawitout.co.nz](http://drawitout.co.nz)

### Dance Pointe *Academy New Zealand*

#### DancePointe Academy

Ballet/Tap/Musical Theatre after-school classes at St Francis are available to give your child the opportunity to learn the joy of dance. Beginners welcome of all ages from 4 years old for Ballet. A new fun Musical Theatre Class on a Thursday is commencing for 5 to 6 year olds. A free trial class for this class for Boys and Girls is available for the first class. Enroll now for term 3.

Contact Sharon

[dancepointenz@gmail.com](mailto:dancepointenz@gmail.com)

[www.dancepointe.co.nz](http://www.dancepointe.co.nz)

mobile 021-2151222



# friends & family deals are here!

From 21 July - 3 August 2025

**cost\* + 5%**

Computers, Whiteware, TVs and Cellular<sup>#</sup>

**cost\* + 7.5%**

Storewide, exclusions apply<sup>#</sup>

**15%** off tech support & product protection<sup>^</sup>  
(excludes Zagg screen protector services)



Offers in this flyer run between 21st July - 3rd August 2025, while stocks last. \*Cost reflects the average cost price of the product. <sup>^</sup> Conditions and exclusions apply. See full terms and conditions for offer [here](#)

Scan this  
barcode instore



OR

Use this code online  
FF\_EDU

Shop now



0800 44 44 88 | Over 65 stores nationwide

Easy ways to pay



Ask us about Interest Free Finance options