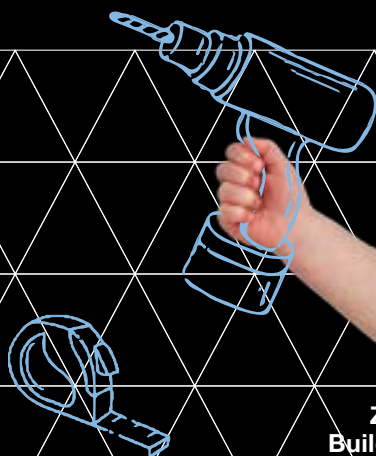
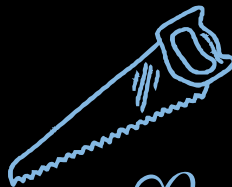


for our

Family Friends & Whānau

of **Churton Park
School** ESTD
1975



Zoe, 5
Builder in
the making



administration.

25th June 2025

Term 2. Week 9.

Principal's Corner - te iwi tahi tatou - we are one family

Empowering Connected Lifelong Learners

Kia ora e te whānau

Road Patrol Help Required

We are currently looking for an amazing person to volunteer to help our wonderful road patrollers on Wednesday afternoons from Term 3. Please contact Liz McLean if you are able to help us out.

Thank you in advance.

Please contact lizm@churtonpark.school.nz for more information or to volunteer.



Matt Stanley

Principal
Churton Park School.

90 Churton Drive

Churton Park

Wellington 6037

Phone 04 478 4282

Contact School

Mid-Year Reports

On Tuesday we emailed home your child's mid-year report. A lot of thought, time and effort goes into these. An extra challenge this year is we are in a transition from the old curriculum to the new one.

Here is a statement from the Ministry of Education to help explain any discrepancies during this process

Statement from Ministry of Education/Minister to Support Schools with Reporting to Parents

As part of our focus on lifting student achievement we have introduced new, knowledge-rich and internationally-comparable curriculum this year for Maths in Years 0-8 and English in Years 0-6, and Te Reo Rangatira Years 0-6 and Pāngarau Years 0-8 wāhanga ako.

This means we are currently changing from the old to the new curriculum. We want to acknowledge that schools and kura will only have been using the new curricula from the start of 2025, which includes new teaching and assessment methods and content.

Because of this you could see a change in your child's progress or achievement compared to previous years which may be the result of changes in the curriculum expectations for your child's year level. If you have concerns or questions about your child's achievement, we strongly suggest you talk with your child's teacher or kaiako. They will also have used their own observations, classroom tasks and other tests to report on the progress your child is making.



[temahau.govt.nz](https://www.temahau.govt.nz)

Matariki Breakfast

It was wonderful to share our Matariki breakfast with you last week and it was exciting to see how many of our whānau joined us and enjoyed sharing in the artwork that our ākonga created.

We hope you were all able to connect with your whānau over the long weekend.

Thank you to our amazing Home & School Association for organising the breakfast.



Parking Around The School Gates

Every week we remind everyone about the traffic around our school gates, we ask you to observe the road rules & signs so we can keep our tamariki safe arriving at school and getting home. Every week we get emails & phone calls from parents & neighbours complaining about people leaving their cars or waiting longer than the 2 minute time limit in the drop-off zone, waiting or parking on yellow lines, performing u-turns and stopping their cars in the middle of the road to pick-up or drop-off their children. We have been in touch with the Council & Police and all three of our school entrances will be randomly monitored and infringement notices will be issued if you are not following the rules. We are sure that nobody wants to pay a fine or waste valuable resources - there is an easy way to avoid further action - let's all follow the rules!

Cranwell Street & Dormar Place

Cranwell Street and Dormar Place are very narrow at the ends where the school gates are located. The council have painted yellow lines around the cul-de-sac and these have been there for several years now.

Yellow lines mean you cannot for any reason stop or wait in this area. When cars are stopped on the yellow lines waiting for children this stops children having a clear view of the road to cross safely, stops cars being

able to turn without reversing and stops cars being able to leave the area safely.

Please do not park or wait on the yellow lines or over driveways.

Churton Drive

The area directly at the front of the school is a **Pick-Up / Drop-Off Zone**. This means you can not park your car in this area from **8am - 9am & 2.30pm - 3.30pm**. **The maximum time you may wait is 2 minutes and drivers must not leave the vehicle.** If your child has not come out in the allotted time, please move off and let others pick up their children. By the time you have gone around the block your child will be there waiting for you.

If you would like to park your car and go to your child's class to collect

your child, please use the parking space on the opposite side of the road where there is a **5 minute parking area** or park further up the road and walk back to school.

Please do not park or wait on yellow lines or over our neighbours driveways (or in their driveways without their permission)!

We are doing our best to take care of your children safely so please do not be offended if you are asked by staff or our road patrol parents to move your vehicle.



Term Dates 2026 - Next Year

For consistency across the Northern Zone Cluster, we are trying to have similar term dates next year. The dates for 2026 are (including 2 teacher-only days):

- **Term 1:** Monday 2 February - Thursday 2 April
- **Term 2:** Monday 20 April - Friday 3 July (Teacher Only Day - Tuesday 2 June after King's Bday - Cluster Expo Day)
- **Term 3:** Monday 20 July - Friday 25 September (Teacher Only Day TBC)
- **Term 4:** Monday 12 October - Wednesday 16 December

More information will be coming home soon.



Mini Ball Term 3 2025 - Closes Today

If your child is interested in playing MiniBall in term 3, please complete the Google form below by 25th June.

<https://forms.gle/AoZhUGTAZy697ym17>

The Year 3/4 league is run on a Monday at Nairnville Rec, with the first game being Monday 21st July and ending 15th September. The Year 5/6 games will be held on a Tuesday at Nairnville and the first game is Tuesday 22nd July and ending 16th September.

The season runs for 9 weeks and the game times are between 3.20pm and 6.50pm and changes each week.

This is a parent run team and each team will need a coach and manager to run it.

There is also a cost to join a team, this will be sorted once we have all the players registered, NO PAY NO PLAY. Teams play in the school t-shirt, these can be purchased from the NZ Uniform shop in Porirua or online.

Any questions, please contact me on sarahb@churtonpark.school.nz



Water Polo Term 4

A year 3 parent is keen to start up a school water polo team. The team would be open to all children in years 3 - 6, the water is not deep but a confidence in and around water is useful. It's a league that is run by the Hawks Water Polo club in terms 1 and 4 at Wellington Regional Aquatic Centre. They run a development league for younger/new players which is the league the team would play in. 6 children play at a time (1 goalie and 5 outfield players) and games consist of two, ten minute halves. Children will be required to pay a \$4 entry fee into the pool each week.

Games start at 4pm and the last one last term started 6:30ish and are played on a Friday.

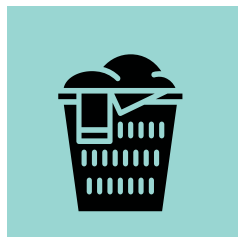
If this is something your child may be interested in, please complete the form below by 2nd July and I will pass your details along to the parent who will be organising it.

Any questions, please contact sarahb@churtonpark.school.nz

<https://forms.gle/GiEAVnsUgjLvpP1N6>

Lost Property

Once again we have a very large pile of misplaced property in the Hall foyer. If your child is missing any items, please check the Lost Property box before the end of term, any items left will be donated to a local charity shop. Named items make it easier for us to reunite them with your child.



Headlice

Please check your child's hair regularly for headlice. The school holidays are a perfect time to check and treat your child's hair.



Sunhats, T-Shirts & Hoodies

Order your items now

As part of our Sunsmart policy all children at Churton Park School are required to wear a sunhat when they are outside during Terms 1 & 4.

Sunhats can be purchased from NZ Uniforms either online or at their Porirua shop. Please make sure you have a school sunhat for your child. If your child has the old style sunhat they can continue to wear them but if your child still needs a school sunhat, please make sure you have purchased one as soon as possible. Sunhats, T-shirts & Hoodies can be purchased using this link <https://churtonpark.nzuniforms.com/catalog/uniform-1107113.htm>



Order Here

Please remember to advise us of Absences



Please keep us in the loop

This year we must report any absences to the Ministry of Education daily.

This means that if you do not tell us why your child is away they will be marked as truant.

If your child is going to be away from school for any reason - illness, appointments, travel, funerals etc - it is very important that you let the office know, so we can account for all our students.

The office will let the classroom teacher know your child is absent.



Often teachers can be away sick or on a course and do not have access to their emails.

If you receive a text from the school looking for your child, please respond. You are able to report an absence in several ways:

Ways to report an Absence

Call - 04 4784282 ext 1

Text - 0274 295 477

Eml - absence@churtonpark.school.nz

Web - www.churtonpark.school.nz

Is your child turning 5 in 2025 or 2026 ?



Help us to plan ahead

To help with our planning for the rest of this year and next year please let the school office know if the following things apply to you:

- Live In-Zone and have a new entrant child who turns 5 in 2025 or 2026 and you are yet to pre-enrol with the school office
- If you live In-Zone but have a child attending another school but intend to enrol at Churton Park School in 2025 or 2026
- If you live Out-of-Zone with a child enrolled at Churton Park School and have a child turning 5 in 2025 or 2026
- If you have a friend, family member or neighbour that does not receive these news

letters but may fall into one of the above categories, please ask them to contact the school as soon as possible by either dropping in to the office, by phone 04 478 4282, email office@churtonpark.school.nz with their child's name, date of birth and your address or by completing an online enrolment form on our website www.churtonpark.school.nz This information is crucial as we plan for the future.

Contact School

Upcoming Events & Reminders for Your Calendar:



- Thursday 26th June - Newlands Intermediate Open Evening, Newlands Intermediate 6.30pm
- Friday 27th June - End of Term 2, 3pm
- Monday 14th July - Term 3 begins, 9am
- Tuesday 22nd & Wednesday 23rd July - School Photos
- Wednesday 30th July - Board of Trustee nominations close
- Monday 4th August - Rāroa Intermediate Parent Information Evening, Rāroa Intermediate 6pm
- Wednesday 3rd September Board of Trustee Election

Contact School

Visit Website

School times and Signing In or Out

01



**Arrive by
8:50 am**

Please have your bag hung, ready to start

02



**Home time
3:00 pm**

It's home-time or after school care-time

School Hours -

Children can arrive at school from 8.30am and should be at school by 8.50am so they have time to put their bags away and get settled ready for school to begin at 9am. If your child arrives after 9am or you are collecting your child for any reason before 3pm they must sign in or out on the iPad at the office.

Save time order lunches online



Lunchonline.co.nz

School Lunches can be purchased online at Lunchonline.co.nz, Families: Take the hassle out of your morning rush and order a school lunch with us. Find out how by scanning the QR Code seen left. Our menu's consist of products from suppliers in our vicinity including, sushi, bakery foods, fusion foods. Lunches are delivered to the school office for your child to collect at lunchtime.

Our KellyClub Before/After school-care programme

Time to join the club:

At Kelly Club Churton Park, we provide quality before - and after-school and holiday programme care. Our programmes are packed with fun activities including cooking, discovery, sports, arts and crafts. We also offer flexible payment plans and same-day booking and cancellations. Visit www.kellyclub.co.nz for bookings and any further information. Click the link below.

KellyClub



Our Values

At CPS we believe and practise the following values daily at school

Manaakitanga
- Respect

Eke Panuku
- Success

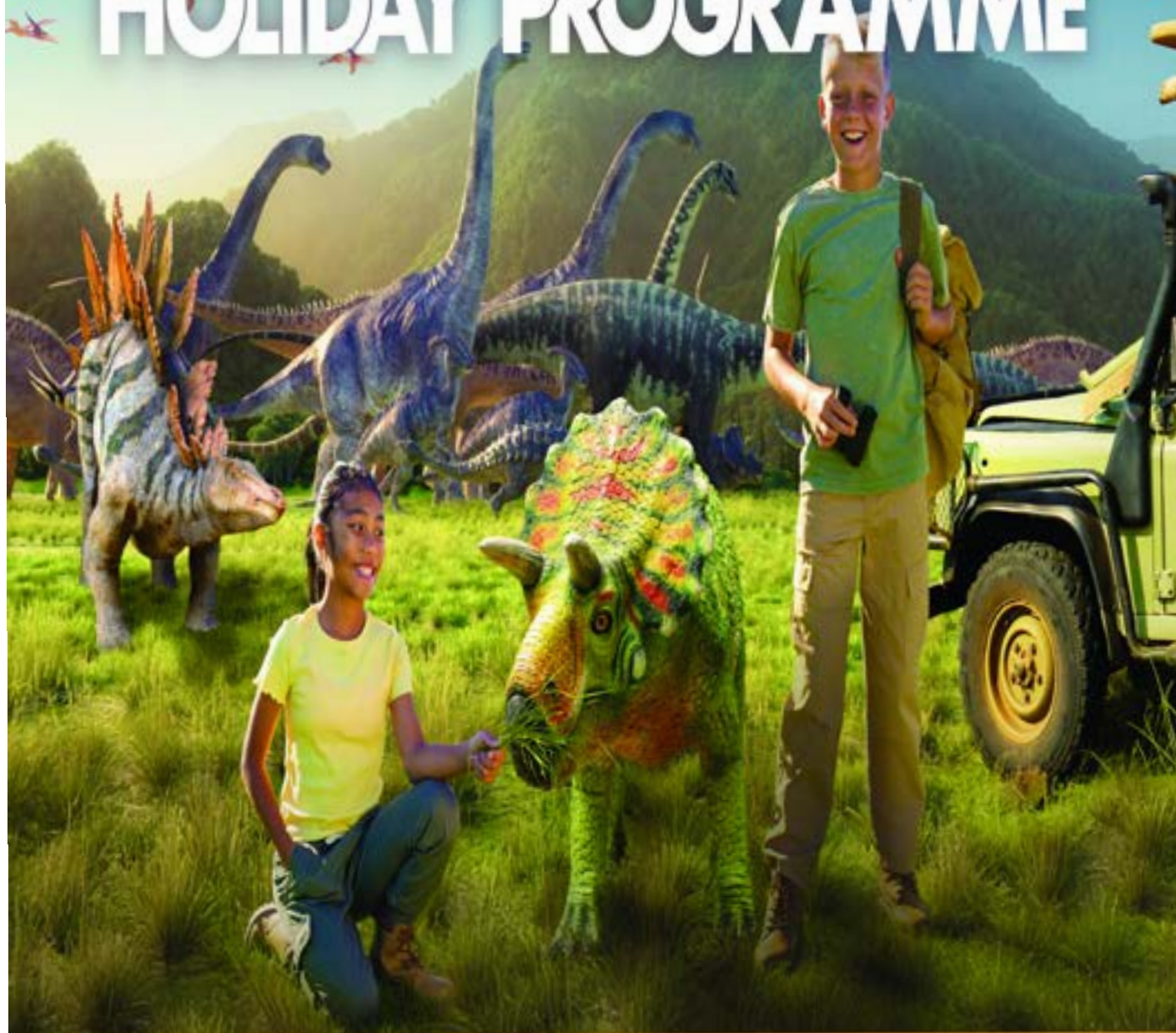
Hauora
- Wellbeing

Pou
manawaora
- Resilience

Ngahau
Fun



HOLIDAY PROGRAMME



BOOK ONLINE NOW AT

www.kellyclub.co.nz

Our Public Notices Section. 1

Goodtime Music Academy

Make some Noise!!!

Get ready to ignite your child's musical passion! Goodtime Music Academy teaches at Churton Park Primary School and is offering award-winning in-school music lessons. Say goodbye to post-school commutes! Dive into the world of music in a vibrant group setting with the following instrument lesson: Drums, Guitar, Keyboard, Ukulele, or our

'Intro to Music' course. But the excitement doesn't stop there! Your child will have the chance to shine in our thrilling concerts. Act fast, as spots are limited. Enrol now at www.goodtimemusicacademy.co.nz/learn-at-school or call us at 04 568 2237. Your child's moment in the limelight awaits



Big Energy? Then Big-Air is for You!

BIGAIR GYMSPORTS & CHEERLEADING

Ready to flip, tumble, and soar? Bigair Gym is the ultimate destination for kids who want to learn cool skills, achieve and build unstoppable confidence! Whether it's cartwheels, flips, tramp tricks, or parkour, Bigair Gyms action packed classes combine fun, fitness, and focus, in a safe, supportive space.

Classes to Help Your Child Shine:

Crashmat Kids Sessions (walking-4 years) – Great for little ones to become familiar with the gym.

Pocket Rockets Gym Classes (3-4 years) – Start building coordination and confidence early!

Gravity Busters Gym Classes (5+ years) – Learn the fundamentals of gymnastics and tumbling.

Team Extreme Gym Classes (Advanced) – Take your skills to the next level!

Free Running (5+ years) – Parkour + flips = epic agility and body control.

Trampoline (5+ years) – Boost spatial awareness and acrobatic abilities.

Recreational Cheerleading (5+ years) – Strength, flexibility, performance—Cheer style!

Tumbling (5+ years) – Learn walkovers, handsprings & aerials—perfect for Cheerleaders and Dancers wanting to boost flexibility and stage skills.

Hurry – Book Online Now for Term 2 Before Spaces Run Out

at www.bigairgym.co.nz! Don't miss out on the chance to help your child grow, achieve, learn, and have fun at Bigair Gym!

Contact us at: Bigair Gym
Tawa: ph. 232 3508, e. office@bigairgym.co.nz at 10b Surrey Street, Tawa.

Email Big Air Gym

Book online for Term 2

Gym Classes at Big Air Gym

W. www.bigairgym.co.nz

C. 04 232 3508,

E. office@bigairgym.co.nz

A. 10b Surrey Street, Tawa.

Public Notices Section. 2

SHOW IN A WEEK
7-11 JULY



email: fastforwardmt@gmail.com
for registration and more details

Monday - Thursday 9am-5pm

Khandallah Presbyterian Church

Friday 9am - 9pm (3 shows!)

Hutt City Church



WELLINGTON



**DISCOVER
WELLINGTON ZOO
LIKE NEVER BEFORE**

Book your holiday programme spot now



Book your tamariki into a school holiday programme
these holidays at Te Nukua o Wellington Zoo.

Book now and let the adventure begin!

Scan the QR code or visit wellingtonzoo.com/holiday-programmes/

Easyswim Swim School - LEARN TO SWIM!

Easyswim runs lessons for babies through to adults out of six school pools around Wellington. Locations include Plimmerton, Tawa, Johnsonville, Rewa Rewa, Khandallah and Newtown School Pools. Birthday Party bookings are also available.

For more information call 234 7946 or email
book@easyswim.co.nz



Performing arts classes led by a
London West End performer!

After school and weekend classes in
Aotea, Johnsonville, Karori, Newtown,
Lower Hutt, and Upper Hutt!

Two week trials available.

For more information, please visit

www.spotlightperformingarts.co.nz



Public Notices Section. 3

Chill out with cello
vibe with violin



SCHOLARSHIPS NOW OPEN
AT TE PAEMANU KORIH
CLOSING DATE 29 JUNE 2025

Email us at
contact@virtuosostings.org.nz
for an application form

Free tuition ...
Serious fun!

JULY HOLIDAY DRAMA PROGRAMME



Lights, Strings & a little bit of Magic!

Join us for three action-packed days of puppetry fun! From designing and crafting your very own puppets to learning the secrets of bringing it to life on stage, this workshop is perfect for kids who love to create, perform, and let their imaginations run wild.



Dates: 30 June, 1 & 2 July 2025 (Mon - Wed)
Time: 9.00 am - 4.00 pm* (doors open from 8.30 am for drop-off)
*Please enquire for late pick-up (available till 6.00 pm)
Venue: Amesbury School, Churton Park
Price: \$215+GST per child for the 3 day workshop
\$75+GST per day per child
We provide morning and afternoon tea.

10% Early Bird Discount (till 15 June)*
10% Sibling Discount*
10% Group Discount*
*conditions apply

Puppet show & demonstration
by
Anna Bailey
from
String Bean Puppets.

0220273316 | DRAMAREMEDY@GMAIL.COM | WWW.DRAMAREMEDY.CO.NZ

SCHOOL HOLIDAYS
Creative Workshops for Young Artists
Spend your next school holidays with Inverlochty Art School!

<p>Children's Creative Holiday Programme DAILY CREATIVE TIME FOR AGES 6-10 YEARS: MON-FRI, 7-11 JULY 9:30-11:30 DAILY</p>	<p>Creative Sewing for Teens WEAR YOUR OWN WORK FOR AGES 10 - 15 MON - TUES, 30 JUNE - 1 JULY 10 AM - 1 PM DAILY</p>	<p>Zentangle for Tweens & Teens MINDFUL PATTERN MAKING FOR AGES 10 - 15 MONDAY 30 JUNE 10 AM - 1 PM</p>
<p>Jewellery Making for Teens TURN RAW SILVER, COPPER & BRASS INTO SHINY WEARABLE RINGS FOR AGES 13+ WEDNESDAY 2 JULY 10 AM - 1 PM</p>	<p>Shashiko & Appliqué UPCYCLING & VISABLE MENDING THROUGH HAND EMBROIDERY FOR AGES 10 - 15 MON - WEDS, 7 - 9 JULY 12:30 - 2:30 PM</p>	
<p>Printmaking Workshop DISCOVER DRYPOINT PRINTMAKING FOR AGES 12+ FRIDAY 11 JULY 10 AM - 1 PM</p>	<p>Pottery Wheel Throwing for Teens CERAMIC VESSEL MAKING FOR AGES 12+ WEDS-THURS, 9-10 JULY 10 AM - 12 PM OR 1 - 3 PM DAILY</p>	

FOR WHĀNĀU
WHERE TAMARIKI AND THEIR CAREGIVERS CREATE SIDE-BY-SIDE

<p>Whānau Sculpture with Clay CREATE A CHIA SEED SHEEP! FOR TAMARIKI & THEIR CAREGIVERS TUESDAY 1 JULY 10 AM - 12 PM OR 1 - 3 PM SUITBLE FOR AGES 6+</p>	<p>Whānau Inky Critters IMAGINATIVE DRAWING WORKSHOP FOR TAMARIKI & THEIR CAREGIVERS THURSDAY 3 JULY 11 AM - 12 PM OR 1 - 2 PM SUITBLE FOR AGES 4+</p>
---	---

www.inverlochty.org.nz • inverlochtyartschool@gmail.com • 04 959 2177

THE LEARNING CONNEXION
School of Creativity and Art

KIDS WINTER HOLIDAY ART PROGRAMME

Week 1: Mon 30th to Fri 4th July
Week 2: Mon 7th to Fri 11th July

BOOK DAY BY DAY!

TLC's Kids Art Holiday Programme is perfect for keeping kids happy and engaged, providing creative holiday fun!



BOOK NOW AT WWW.TLC.AC.NZ



SCHOOL HOLIDAY FUN FOR KIDS

Fri
4 July

MOVIE: THE WILD ROBOT

11am - 1pm | Koha Entry

Mon
7 Jul

ZAPPO THE MAGICIAN

11am or 1pm | \$5.00 per ticket

Thu
10 Jul

MOVIE: MOANA 2

11am - 1pm | Koha Entry

FOR ALL THE
INFO AND TICKETS
SCAN HERE



OR CLICK [HERE](#)



Ngā Manu Nature Reserve
74 Ngā Manu Reserve Rd, Waikanae

hello@ngamanu.org.nz
04 293 4131

Please note prices & koha do not include entry to the reserve

Mad for Marshmallows!



Try
CIRCUS
This School Holiday
June 30 - July 4

THE CIRCUS HUB

- ✓ Aerials
- ✓ Tumbling
- ✓ Balancing
- ✓ Juggling
- ✓ and more ...

ages 5 - 15
no experience necessary

Book online now at circus.org.nz



Public Notices Section. 6



KELLY SPORTS NETBALL HOLIDAY PROGRAMME JULY 2025!

Come along and improve your technique, knowledge and skills with our awesome Kelly Sports Coaches!

We will focus on the core skills of Passing, Catching, Teamwork, Defending & Shooting, but MOST importantly having as much FUN as possible!

There will be 2 groups

Years 1-4 - Aimed for Beginners, these sessions work on improving the basic netball skills and to help start to develop technical and tactical knowledge in accordance with the Future Ferns Programme

Years 5-8 - These sessions will work on sharpening the basic skills and the children will start to develop a better understanding of the 7-side game and the different positional roles. We will use fun drills and games to develop and challenge young players focusing on the key skill areas for their level of development while also have fun!!

Raroa Normal Intermediate, Johnsonville, Wellington - held on the outdoor court outside the school hall.

Its great practice for the winter season.

Week 1 - Tues, Weds, Thurs 9.00am-12.00pm



KELLY SPORTS FOOTBALL HOLIDAY PROGRAMME JULY 2025! ⚽ ⚽ ⚽

A perfect programme for "Beginner's" and those just wanting to have a bunch of fun.

Come along and improve your technique, knowledge and skills with our top class Coaches!

We will focus on the core skills of control, dribbling, passing, tackling and shooting but MOST importantly having as much FUN as possible! Its great practice for the winter season!

Week 1 - Tues, Weds, Thurs 9.30am-12.30pm

Week 2 - Tues, Weds, Thurs 9.30am-12.30pm

Held in the Green Room, Wests rugby clubrooms, Ian Galloway Park, Wilton.

Enrol for either programme at www.kellysports.co.nz



CALLAGHAN

— EQUESTRIAN CENTRE —

Callaghan Equestrian Centre is a family owned and operated riding school, welcoming riders of all levels and ages. Learn to ride on one of our quality schooled horses or your own.

We're located in the heart of the Wellington equestrian scene at 507 Ohariu Valley Road, Ohariu Valley. Just an 8 minute drive from Johnsonville.



HOLIDAY PROGRAMME

2nd, 3rd and 4th July & 9th, 10th and 11th July

9am - 3pm, \$150 per day

Book as many days as you like via email. No experience needed! Each day will consist of:

- 1 riding lesson
- Games and activities
- Daily pony care & handling

PONY GROUP

Term based

Pony Group is focussed on teaching riders to care for and ride ponies across a variety of disciplines to develop a well-rounded young rider. Sessions will rotate over the term between arena riding, hacking in the hills and equine care & handling.



PRIVATE & GROUP LESSONS

Our experienced instructors are available 6 days a week for one to one and group tuition. Our team takes a well-rounded approach to coaching our clients over a variety of disciplines

For all enquiries, email
info@callaghanequestriancentre.co.nz

STEM Holiday Programme

MAKERROOM
Wellington



Portable Sound FX Board LED Matrix Alarm Clock Stacking Blocks Game

This Holidays Choose from 3 Awesome Projects in 5 Convenient Locations

Miramar, Kilbirnie, Petone, Northland and Newlands

One Day, Take Home Builds For Young Makers Aged 10-14

Small Group Sizes With Friendly Experienced Instructors

\$135 For The Day, 4th - 11th July

To Learn More and Book Your Place visit:
www.makerroomwellington.nz



Friendship in mothers of pre-teens research

Are you a mother (legal guardian)?

Is your oldest child aged 10-12 years old?

Do you both live in Wellington City?

Join us in research!

What's involved:
Creating collage art about your friendship experience
(no art skills required)
+
Chat about your art creation

Token of thanks
and
refreshments
provided

*For more details,
email:*

samantha.walker@vuw.ac.nz